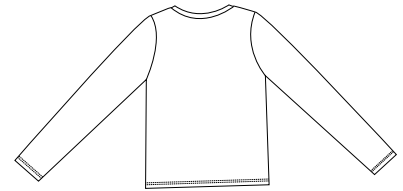
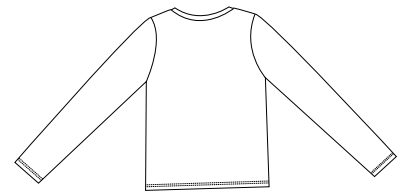


Ladies Long Sleeve Perfect Weight District Tee



Front



Back

DT201

- * 4.3-ounce * 100% ring spun combed cotton * 40-singles * Preshrunk * Colorfast
- * Modern feminine cut

Care Instructions:



Machine wash cold, wash inside out, wash with like colors. Do not bleach. Tumble dry low. Warm iron if necessary.

Finished Measurements in Inches

Size	S	M	L	XL	XXL	Plus 1X	Plus 2X
Chest	15.5	16.35	17.5	18.5	19.5	20.5	21.5
Body Length	25	26	27	28	29	30	31
Sleeve	24.5	25	25.75	26.25	26.75	27.25	27.75
Neck Width	6.75	7	7.25	7.5	7.75	8	8.25

Chest width measured 1" below armhole. Body length measured from high point shoulder to hem. Sleeve length measured from high point shoulder to hem.

Colors

	Bright White
	Espresso
	Jet Black
	Maritime Blue
	Thyme

Please Note:

Colors shown are approximate and for reference only. For closest match see PMS colors, or for exact match, returnable samples and grommited samples are available.

Color Chart

Colors	Bright White	Espresso	Jet Black	Maritime Blue	Thyme
Textile PMS	11-0601TC	19-1314TC	19-4203TC	19-4203TC	No Match
General PMS	No Match	4975C	Process Black	No Match	No Match