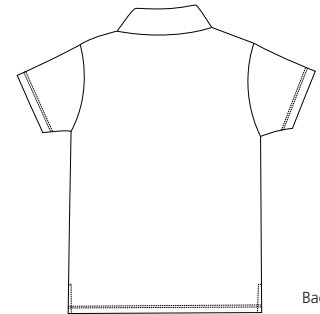


Ladies District Sport Shirt with Pocket



Front



Back

DT215

- * 3.69-ounce * 100% ring spun combed cotton * 40-singles * Side vents
- * Dyed-to-match buttons * Hemmed sleeves * Self-fabric collar
- * Preshrunk * Satin neck tape * Tonal satin tipping on placket, neck seams and side
- * Feminine fit

Care Instructions:

Machine wash cold, wash inside out, wash with like colors. Do not bleach. Tumble dry low. Warm iron if necessary.

Finished Measurements in Inches

Size	S	M	L	XL	XXL	Plus 1X	Plus 2X
Chest	16	16.75	17.5	18.25	19.25	20.25	21.25
Body	24	25	26	27	27.5	28	28.5
Sleeve	6	6.25	6.5	6.75	7	7.25	7.25
Sweep	16.5	17.25	18	18.75	19.75	20.75	21.75
Neck	6.5	6.75	7	7.25	7.5	7.75	8

Chest width measured 1" below armhole. Body length measured from high point shoulder to hem. Sleeve measured from shoulder seam to hem. Sweep measured from seam to seam. Neck measured from seam to seam

Colors

	Bright Green
	Brilliant Red
	Midnight Black
	Pink
	Powder Blue
	White

Please Note:

Colors shown are approximate and for reference only. For closest match see PMS colors, or for exact match, returnable samples and grommeted samples are available.

Color Chart

Colors	Bright Green	Brilliant Red	Midnight Black
Textile PMS	15-5534TC	19-1664TC	19-4203TC
General PMS	347C	186C	Process Black
Colors	Pink	Powder Blue	White
Textile PMS	13-1906TC	13-4411TC	11-0601TC
General PMS	706C	657C	No Match