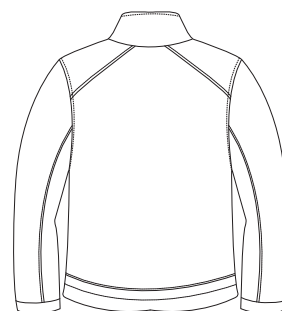


Recycled Polyester Soft Shell Jacket

PORT AUTHORITY®



Front



Back

J797

* 63% recycled polyester, 32% recycled rayon, 5% spandex woven fabric bonded to 100% polyester fleece backing * 1000MM waterproof rating * 1000G/M2 breathability rating * Includes a laminate film insert to repel water * Storm flap with chin guard * Ergonomic zipper pulls * Dyed-to-match inner fleece * Dyed-to-match zippers * Patch pocket on left sleeve

Care Instructions:
Machine wash cold.
Do not dry clean, do not iron.
Do not bleach, do not tumble dry.

Finished Measurements in Inches

Size	XS	S	M	L	XL	2XL	3XL	4XL
Length	27.75	28.25	28.75	29.75	30.75	31.75	32.25	32.75
Chest	20.5	22.5	24	25.5	27	28.5	30	31.5
Sleeve	31	33	35	36	37	37.5	38	38.5
Areas for Decoration	Left Chest / Right Chest / Full Back			Port Pocket™		NA		

Colors

	Cypress Blue
	Cobblestone
	Black

Please Note:
Colors shown are approximate and for reference only. For closest match see PMS colors, or for exact match, returnable samples and grommeted samples are available.

Collar measured center back seam to top hem, Chest width 1" below arm hole, Side pocket from top to bottom of opening, Body length from back neck seam to hem, Sleeve length from center back seam to hem

Color Chart

Jacket Colors	Cypress Blue	Cobblestone	Black
Textile PMS	No Match	No Match	No Match
General PMS	5275 C	Warm Grey 6 C	Process Black C