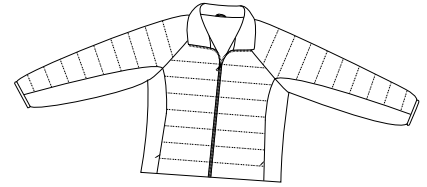
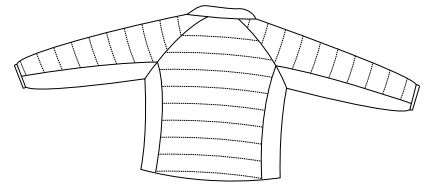


Ladies Madison Jacket

PORT | AUTHORITY®



Front



Back

L766

- * Princess cut * 100% polyester ripstop shell * 100% polyester lining
- * Body padded with 3-ounce quilted polyfill * Sleeves padded with 1.5-ounce quilted polyfill
- * Zipper pockets

Care Instructions:

Machine wash cold, separately.
Gentle cycle. Tumble dry low. Cool iron if needed. Do not bleach.

Finished Measurements in Inches

Size	XS	S	M	L	XL	XXL	Plus 1X	Plus 2X
Length	22.5	23.5	24.5	25.5	26.5	27	27.5	28.5
Chest	37.5	39.5	41.5	44.5	47.5	50.5	53.5	58.5
Sleeve	31	32	33	34	35	35.5	36	36.5
Areas for Decoration	no specified area			Port Pocket™		na		

Chest width measured bottom of arm hole. Body length measured from back neck seam to hem.
Sleeve length measured from center back seam to hem.

Colors

	Black
	Catalina Blue
	Light Pink
	Nova Purple
	Red
	White

Please Note:

Colors shown are approximate and for reference only. For closest match see PMS colors, or for exact match, returnable samples and grommeted samples are available.

Color Chart

Jacket Colors	Black	Catalina Blue	Light Pink	Nova Purple	Red	White
Textile PMS	19-4005TC	No Match	12-2906TC	19-3903TC	19-1762TC	11-0601TC
General PMS	426C	542C	503C	5185C	201C	No Match