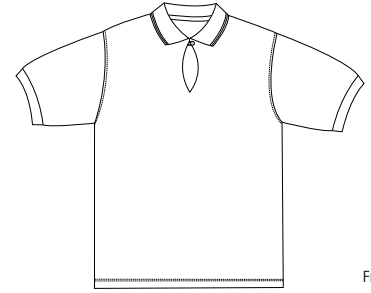
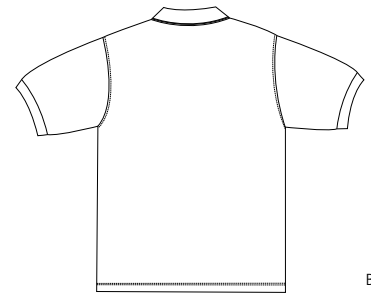


Ladies DRY-FIBER DYNAMICS® Chevron-Tipped Sport Shirt



Front



Back

LP501

With DRY FIBER DYNAMICS® fabric, this shirt wicks moisture for dry, cool comfort. The chevron-tipped keyhole collar adds a polished look while gentle shaping makes this shirt distinctly feminine. With pearlized PING logo buttons, embroidered PING logo on the right sleeve and double-needle-stitched hem with side vents. In 5.5-ounce, 60/40 cotton/polyester jersey knit.

Care Instructions:
Machine wash cold with like colors. Delicate cycle. Only non-chlorine bleach if needed. Tumble dry low. Cool iron if needed.

Finished Measurements in Inches

Size	S	M	L	XL
Chest	19	20	21.5	23
Length	23.5	24	24.5	25
Sleeve	7.5	7.75	8	8.25
Bust	33.5-34.5	35.5-36.5	38-39.5	41-43
Retail Size	4/6	8/10	12/14	16/18

Chest measured 1" under arm hole. Length measured from center back. Sleeve measured from center back.

Colors

	Frosty Green
	Flag Red
	Butter
	Black
	White
	True Navy
	Andes Blue

Please Note:

Colors shown are approximate and for reference only. For closest match see PMS colors, or for exact match, returnable samples and grommets samples are available.

Color Chart

Colors	Frosty Green	Flag Red	Butter	Black	White	True Navy	Andes Blue
Textile PMS	No Match	No Match	No Match	No Match	No Match	No Match	No Match
General PMS	15-5706 TC	073010 C	12-0715 TC	N-10 C	11-0601 Tc	732002 C	16-4120 TC