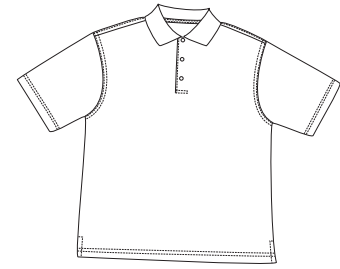


Dry Fiber Dynamics® Jacquard Sport Shirt



Front



Back

P318

- * 4.5-ounce * 100% micro polyester with DRY-FIBER DYNAMICS® Technology
- * Welt collar with cross grain neck tape * Embossed PING mother of pearl buttons
- * Tonal PING embroidery on right sleeve and inside placket * Open sleeves
- * Half moon locker patch * Tone-on-tone embroidered PING® logo on collar
- * Double-needle hem, shoulder and armholes * Side vents * 3-button placket

Care Instructions:

Machine wash cold with like colors.
Delicate cycle. Only non-chlorine bleach
if needed. Tumble dry low.
Cool iron if needed.

Finished Measurements in Inches

| Size | XS | S | M | L | XL | 2XL | 3XL | 4XL |
|----------|----|-------|--------|------|--------|------|-------|------|
| Chest | 20 | 21.5 | 23 | 24.5 | 26 | 29 | 31 | 33 |
| Length | 28 | 29 | 30 | 31 | 32 | 33.5 | 34.5 | 35.5 |
| Sleeve | 10 | 10.25 | 10.625 | 11 | 11.375 | 11.5 | 11.75 | 12 |
| Shoulder | 20 | 21 | 22 | 23 | 24 | 25.5 | 26.5 | 27.5 |

Chest measured 1" under arm hole. Length measured from center back. Sleeve measured from center back.

Colors

| | |
|--|--------------|
| | Black |
| | Blue Noon |
| | Bright White |
| | Navy |

Please Note:

Colors shown are approximate and for reference only. For closest match see PMS colors, or for exact match, returnable samples and grommeted samples are available.

Color Chart

| Colors | Black | Blue Noon | Bright White | Navy |
|-------------|---------------|------------|--------------|------------|
| Textile PMS | 19-4006 TC | 15-4319 TC | 11-0601 TC | 19-3933 TC |
| General PMS | Process Black | 542 C | No Mach | 533 C |