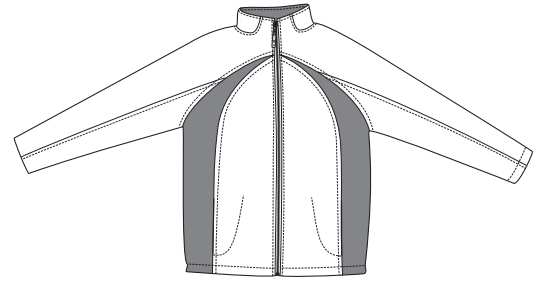
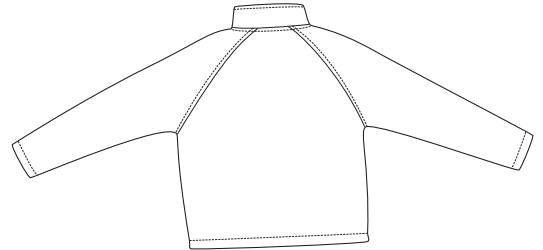


Soft Shell Jacket

PING
COLLECTION



Front



Back

P908

- * 100% polyester poplin bonded to fleece
- * Storm fly for wind protection
- * Drawcord hem
- * Seamless shoulders for comfort
- * Tonal embroidered PING on right sleeve

Care Instructions:







Machine wash cold, separately, gentle cycle, mild detergent, non-chlorine bleach only. Tumble dry low, remove promptly. Cool iron if needed. May be dry cleaned.

Finished Measurements in Inches

Size	XS	S	M	L	XL	2XL	3XL	4XL
Chest	21.5	22.5	24	25.5	27	30.5	32.5	34.5
Length	26	26.5	27	27.5	28	30	31	32
Sleeve	33.5	34.5	35.5	36.5	37.5	38	38.75	39.5
Shoulder	19	19.75	20.5	21.25	22	23.75	24.75	25.75

Chest measured 1" under arm hole. Length measured from center back. Sleeve measured from center back.

Colors

		Black/Black
		Dark Indigo/Black
		Russet/Black

Please Note:

Colors shown are approximate and for reference only. For closest match see PMS colors, or for exact match, returnable samples and grommeted samples are available.

Color Chart

Colors	Black	Dark Indigo	Russet
Textile PMS	19-0000 TC	19-4104 TC	17-0909 TC
General PMS	Process Black	432 C	7531 C