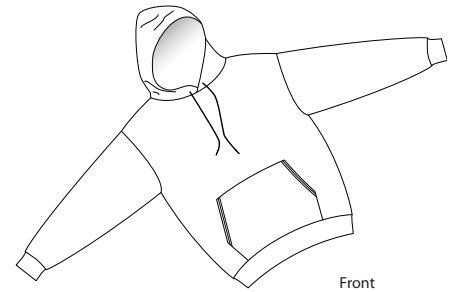
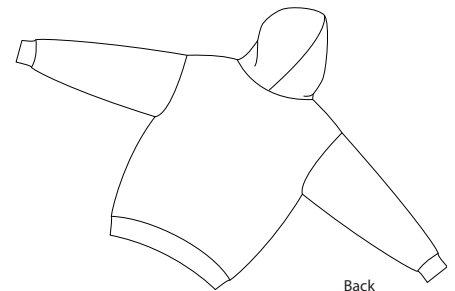


Pullover Hooded Sweatshirt

PORT & COMPANY®



Front



Back

PC90H

- * 9-ounce * 50/50 cotton/poly fleece * Double-lined hood with grommets
- * Matching drawcord * Set-in sleeves * Muff pocket

Care Instructions:
Machine wash cold. Non-chlorine bleach when needed, Tumble dry medium. Do not iron decoration.

Finished Measurements in Inches

Size	S	M	L	XL	2XL	3XL	4XL
Chest	20	22	24	26	28	30	32
Body	26	27.5	28.5	29.5	30.5	31.5	34
Sleeve	34	35	36	37	37.5	38	38.5

Neck measured by circumference, Chest width measured 1" below arm hole, Body length from back neck seam to hem, Sleeve length from center back to hem

Colors

White
Lights
Ash
Darks
Athletic Heather
Black
Dark Green
Maroon
Navy
Orange
Purple
Red
Royal
Gold
Cardinal
Kelly
Safety Green
Dark Chocolate Brown

Color Chart

Colors	Ash	Athletic Heather	Black	Dark Green	Maroon	Navy
PMS	No Match	No Match	Process Black	5535C	No Match	296C
Colors	Orange	Purple	Red	Royal	White	Gold
PMS	171C	273C	200C	661C	No Match	137C
Colors	Cardinal	Kelly	Safety Green	Dark Chocolate Brown		
PMS	195C	340C	No Match	7519C		

Please Note:
Colors shown are approximate and for reference only. For closest match see PMS colors, or for exact match, returnable samples and grommets samples are available.