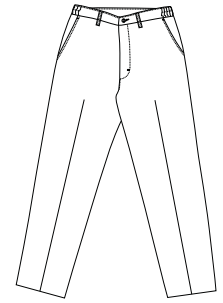
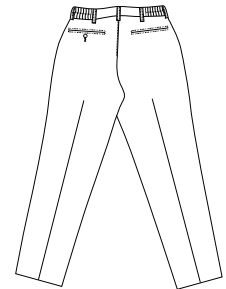


# CornerStone™ - Ladies Elastic Insert Pant.



Front



Back

PT61



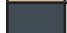
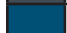
- \* 7.5-ounce, 65/35 poly/cotton twill
- \* IL50-certified for lasting wear
- \* Two front and back pockets

Care Instructions:  
Machine wash.  
Tumble dry.

## Finished Measurements in Inches

Size	4	6	8	10	12	14	16	18	20	22	24	26	28
Waist rel	26.5	27.5	28.5	29.5	31	32.5	34	36	38	40.25	42.5	44.75	47
Waist ex	29.5	30.5	31.5	32.5	34	35.5	37	39	41	43.25	45.5	47.75	50

## Colors

	Black
	Khaki
	Charcoal
	Navy

Please Note:  
Colors shown are approximate and for reference only. For closest match see PMS colors, or for exact match, returnable samples and grommeted samples are available.

## Color Chart

Jacket Colors	Black	Khaki	Charcoal	Navy
Textile PMS	No Match	No Match	No Match	No Match
General PMS	426 C	8003 C	445 C	446 C