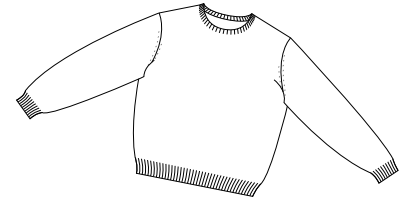
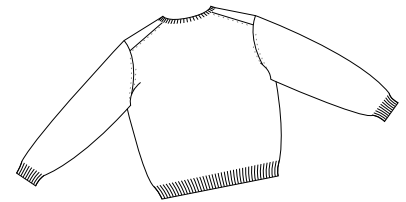




RED HOUSE
THE WINE COUNTRY LIFESTYLE



Front



Back



Care Instructions:
Dry clean only.




PURE CASHMERE PULLOVER RH18

Our cashmere crewneck is strengthened at the shoulders and armholes by hand stitching. High-grade two-ply yarn holds its shape for a look that is truly enduring.

100% cashmere
Rib knit cuffs and hem

Finished Measurements in Inches								
Size	XS	S	M	L	XL	2XL	3XL	4XL
Chest	20	21.5	23	24.5	26	27.5	29.5	31.5
Body	24	25	26	27	28	29.5	30.5	31.5
Sleeve	30.5	31.5	32.5	33.5	34.5	36	37	38
Shoulder	16	17	18	19	20	21.5	22.5	23.5

Chest measured 1" under arm hole. Body length measured from high point shoulder seam, down front to hem.
Sleeve measured from center back neck seam to cuff. Shoulder width measured from point to point.
Collar measured by circumference. Placket measured by length, including box.

Colors	
	Black
	Charcoal Heather
	Insignia Blue

Please Note:
Colors shown are approximate and for reference only. For closest match see PMS colors, or for exact match, returnable samples and grommited samples are available.

Color Chart			
Colors	Black	Charcoal Heather	Insignia Blue
Textile PMS	19-1712TC	No Match	19-4110TC
General PMS	Process Black	No Match	7456C
Madeira (Tonal Emb)	1007	No Match	1162

Red House Embroidery Recommendations *Provided by the Embroidery Trade Association*

RH18/RH17 – Cashmere Pullover & Ladies Cashmere Cardigan

Backing: 2 oz cut-away
Thread: 40 weight; 35 weight for large solid embroidery
Soluble topping recommended.
Needle: Ball point

This information is intended to serve as a guideline for embroiderers. SanMar is not responsible for the compromised integrity of Red House fabrics due to embroidery or decoration.

Notes: Embroidery designs should be filled for support. Wide stitches cause distortion of fabric and results in holes. Therefore, satin stitches are not recommended unless placed on top of a filled banner.