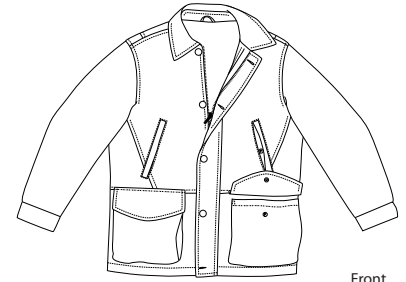
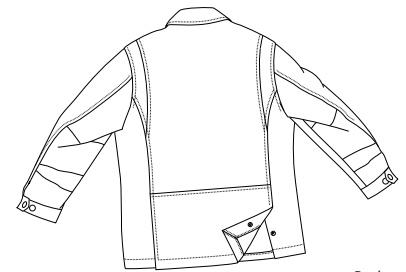




RED HOUSE
THE WINE COUNTRY LIFESTYLE



Front



Back



Care Instructions:
Professional leather clean only.

CALF SUEDE JACKET

RH27

Interior leather patch features the Red House story.
Premium suede leather shell
100% cotton upper body lining
100% Acetate quilted nylon sleeve and lower body lining
Slash pockets, patch pockets and an interior zip pocket
Antique brass zipper front, buttoned storm flap and cuffs

Finished Measurements in Inches								
Size	XS	S	M	L	XL	2XL	3XL	4XL
Chest	22	23	24.5	26	27.5	29	30.5	32
Body	30	30.5	31	31.5	32	32.5	32.5	33
Sleeve	34	34.5	35	35.5	36	36.5	37	37.5

Colors	
	Brown

Please Note:
Colors shown are approximate and for reference only. For closest match see PMS colors, or for exact match, returnable samples and samples are available.

Chest measured 1" under arm hole. Body length measured from center back neck seam to hem.
Sleeve measured from shoulder seam to hem. Shoulder width measured from arm hole to arm hole.
Sweep measured side seam to side seam.

Color Chart	
Colors	Brown
Textile PMS	Natural variations in the leather prevent match.
General PMS	Natural variations in the leather prevent match.
Madeira (Tonal Emb)	Natural variations in the leather prevent match.