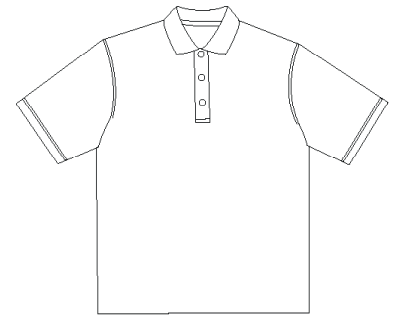
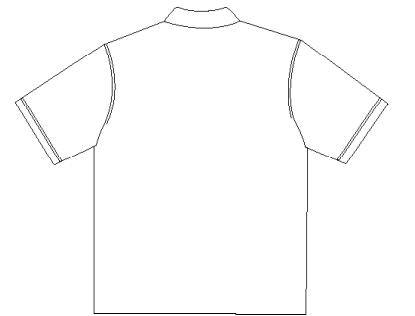


RED HOUSE

THE WINE COUNTRY LIFESTYLE



Front



Back

100% ORGANIC COTTON PIQUE POLO RH31

Flat knit collar with three-button placket, grosgrain trim on the inside neck and hemmed sleeves. Red House engraved buttons and right-sleeve Red House embroidery.



Care Instructions:
Machine wash cold, inside out.
Lay flat to dry.

Finished Measurements in								
Size	XS	S	M	L	XL	2XL	3XL	4XL
Width	20.5	21.5	23.5	25.5	27	28.5	30	33
Length	27	30.5	31.5	32.5	33.5	34	34.5	35.5
Sleeve	9.5	11	11.5	12	12.5	13	13.5	14.5

Chest measured 1" under arm hole. Body length measured from center back neck seam to hem. Sleeve measured from shoulder seam to hem. Shoulder width measured from arm hole to arm hole. Collar measured by circumference. Placket measured by length, including box.

Col-	
	Navy
	Yellow
	Rust
	Red
	Vanilla
	Black

Please Note: Colors shown are approximate and for reference only. For closest match see PMS colors, or for exact match, returnable samples and grommated samples are available.

Color Chart						
Colors	Navy	Yellow	Rust	Red	Vanilla	Black
General PMS	534 C	7403 C	1605C	7420C	WMGY1C	Process Black
Textile PMS	19-3810TC	14-0827TC	No Match	No Match	No Match	19-1102TC
Madeira Classic (Tonal Emb)	1275	1349	No Match	No Match	No Match	1007

Red House Embroidery Recommendations *Provided by the Embroidery Trade Association*

RH01/RH02 – Honeycomb Performance Pique Polo & Ladies Honeycomb Performance Pique Polo

Backing – 3 oz cut-away or tear-away
Thread: 40 weight
Soluble topping recommended.
Needle: Ball point
Notes: This garment will work well with most designs, but take care not to stretch the fabric when hooping.

This information is intended to serve as a guideline for embroiderers. SanMar is not responsible for the compromised integrity of Red House fabrics due to embroidery or decoration.